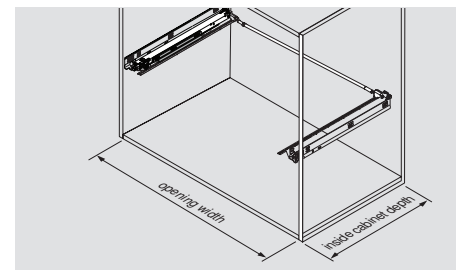


MOVENTO 763/769

Lateral Stabilizer Installation Instructions

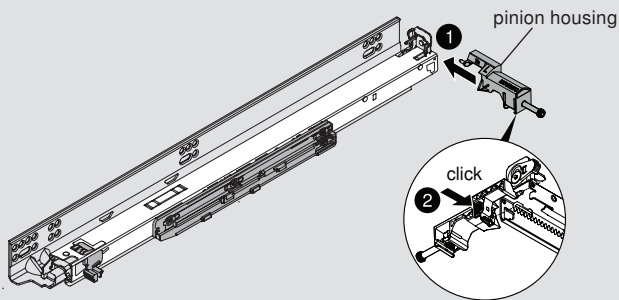
Installation



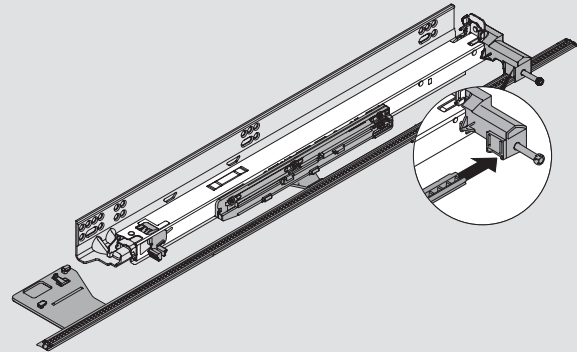
NOTE: Recommended for opening widths 610 (24") to 1369 (53-29/32") wide

Step 1 – Attach left and right pinion housings

- 1 Insert locating pins into MOVENTO runner.
- 2 Press orange locking clips to lock into place.

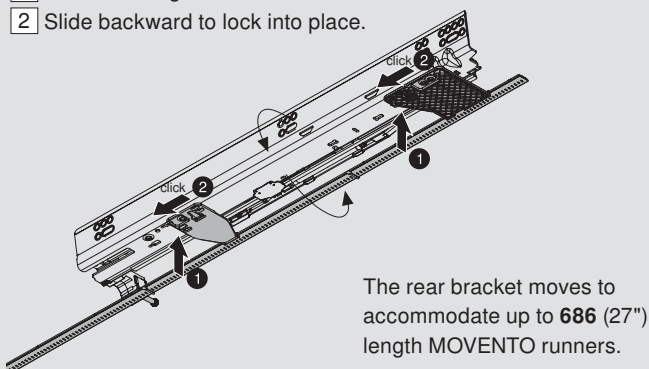


Step 2 – Slide gear racks into pinion housings

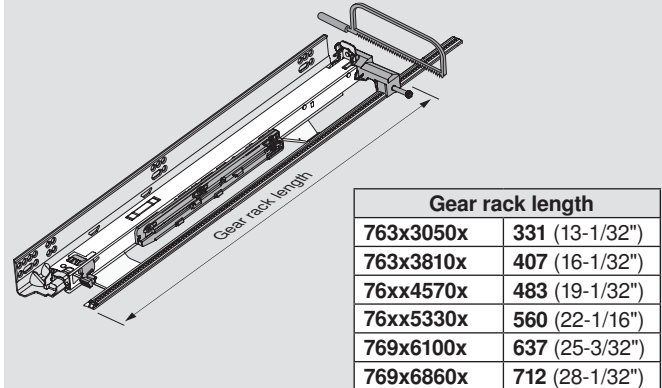


Step 3 – Install gear racks

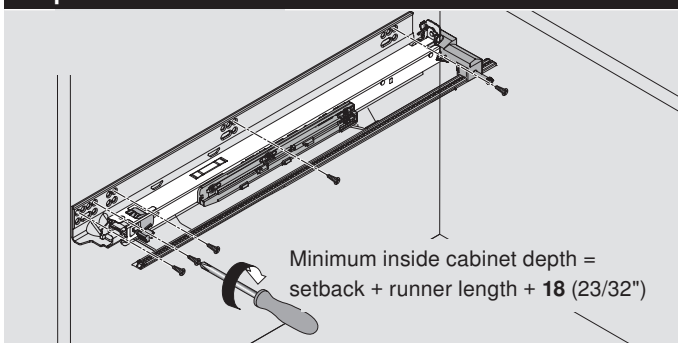
- 1 Insert locating tabs into cut-outs on bottom of runners.
- 2 Slide backward to lock into place.



Step 4 – Cut gear racks to length



Step 5 – Install runners

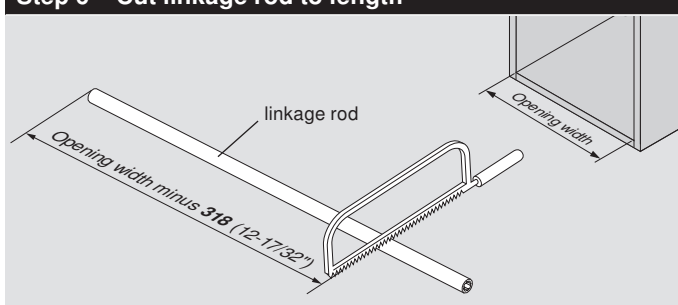


NOTE:

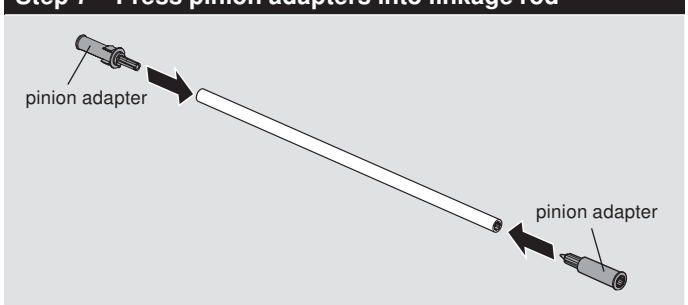
For use in frameless and blocked-out face frame applications with **305 (12")** to **686 (27")** length drawers.

MOVENTO runners will sit **2 (3/32")** higher when using the lateral stabilizer in bottom mount applications, and may have to be raised for some bottom mount drawer applications using SERVO-DRIVE.

Step 6 – Cut linkage rod to length

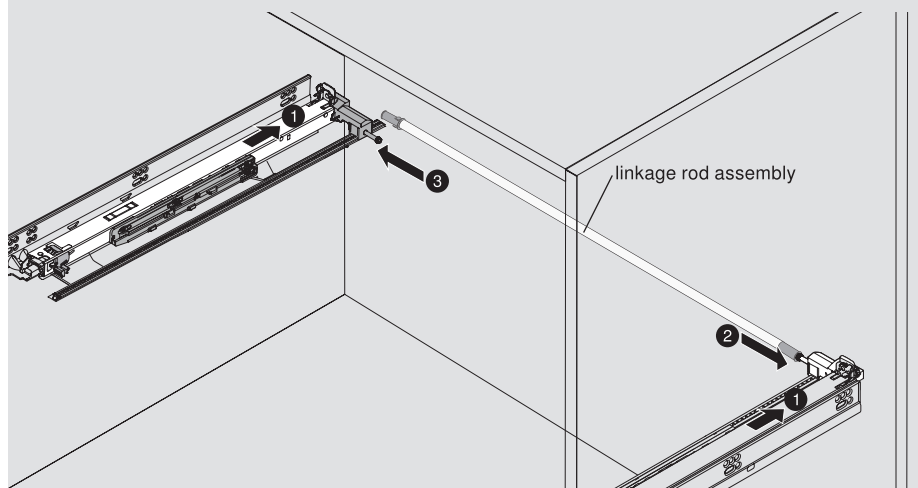


Step 7 – Press pinion adapters into linkage rod



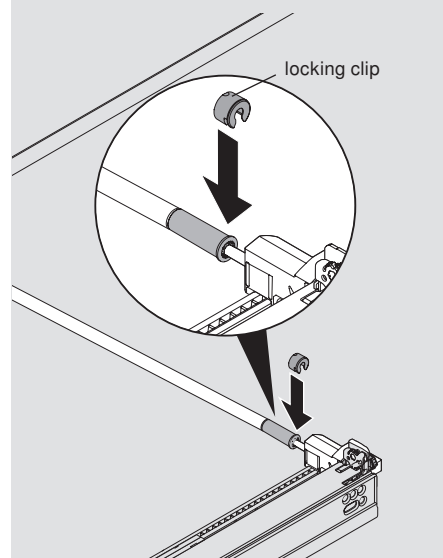
Step 8 – Install linkage rod assembly

- 1 Close drawer runners.
- 2 Slide right pinion adapter onto right pinion.
- 3 Slide linkage rod assembly left onto left pinion.



Step 9 – Install locking clips

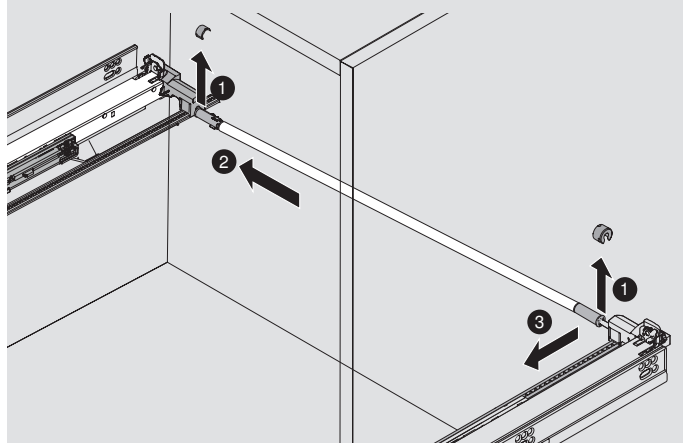
- 1 Install locking clips on both adapters.



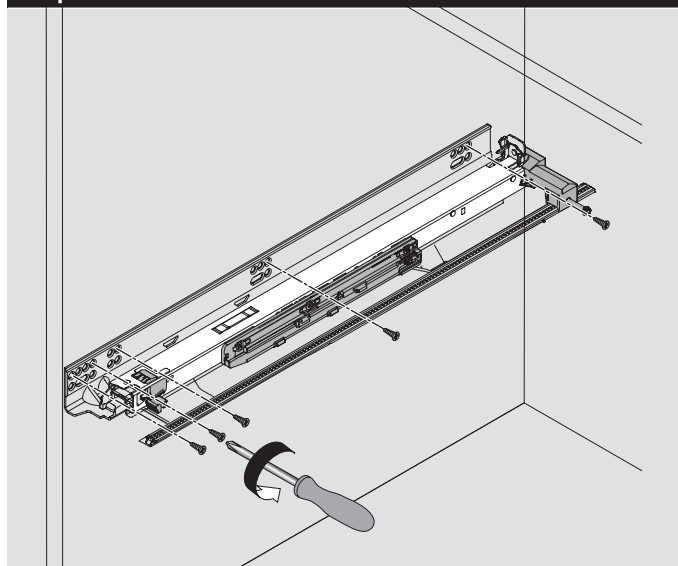
Removal

Step 1 – Remove locking clips and linkage rod assembly

- 1 Remove locking clips.
- 2 Slide linkage rod assembly left.
- 3 Pull forward on right side to remove.

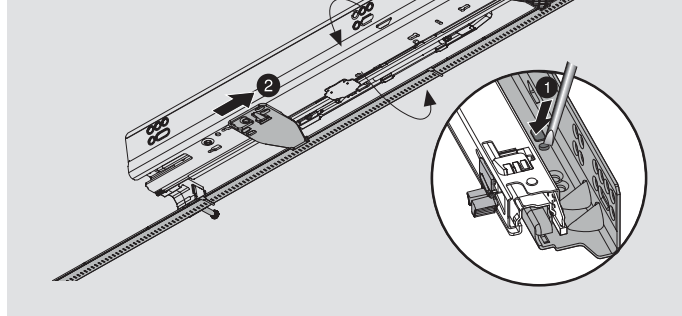


Step 2 – Remove runners



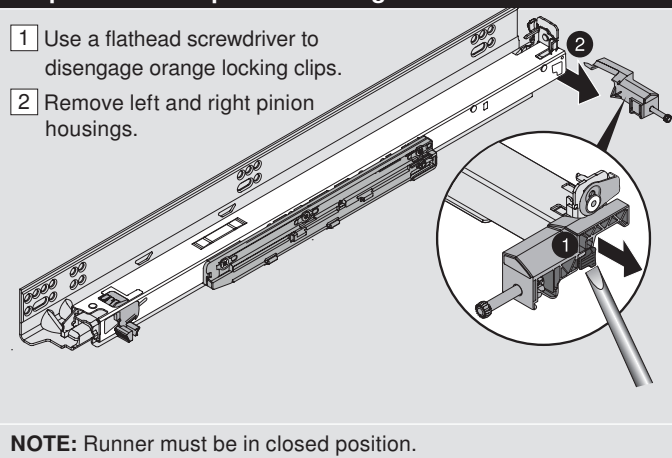
Step 3 – Remove gear racks

- 1 Press locking pin on top of front and rear brackets.
- 2 Slide left and right gear racks forward to remove.



Step 4 – Remove pinion housing

- 1 Use a flathead screwdriver to disengage orange locking clips.
- 2 Remove left and right pinion housings.



NOTE: Runner must be in closed position.